



Introduction

These valves are designed to protect the reservoirs against excessive positive or negative (vacuum) pressures due to the loading or unloading operations and temperature variations. As the reservoir pressure exceeds the valve relief or vacuum setting, the pallets arise allowing the venting or the vacuum relieving of the reservoir.

Advantages

- Reliable operations reduces vapor losses
- Replaceable seats and pallet
- Bird screen avoids the entering of foreign elements.
- Easily maintenance and installation
- High Flow Capacity

Technical Specification

Pressure Set	2.2 to 100 milibar
Vacuum Set	2.2 to 75 milibar
Size	DN (50,80,100,125,150,200,250)
Operating Temperature	-20 °C to +85°C
Option	Direct /Lateral Installation
Material	Body: Aluminum, Carbon Steel, Stainless Steel
	Diaphragm & O-ring: EPDM, FKM, Viton, Nitrile
	Seat & Pallet: Stainless Steel 316/316L/304
	Hood: Stainless Steel 304/316

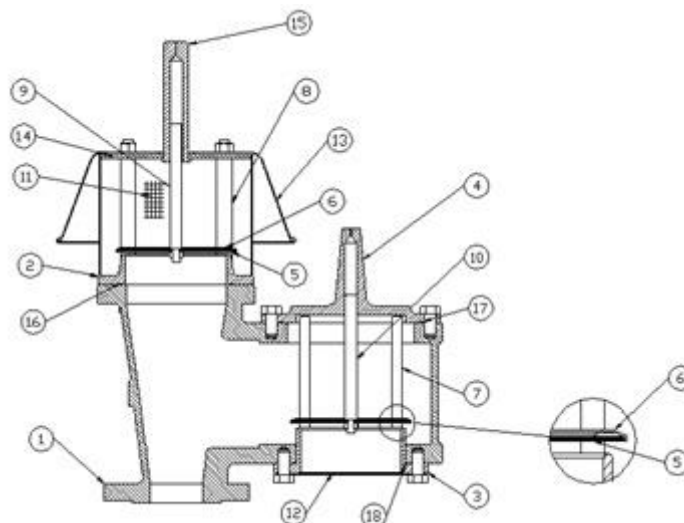
Pressure Relief Capacity (Nm³/h)

Set Pressure	Size						
mm Wc	2" (DN50)	3" (DN75)	4" (DN100)	6" (DN150)	8" (DN200)	10" (DN250)	12" (DN300)
25	102	225	388	880	1520	2400	3440
50	145	318	548	1240	2150	3400	4870
75	177	390	671	1520	2640	4160	5960
100	204	450	775	1760	3050	4800	6890
125	228	503	867	1970	3410	5370	7700
150	250	551	949	2150	3730	5880	8430
200	289	636	1100	2490	4310	6790	9740
250	323	711	1220	2780	4810	7590	10900
300	354	779	1340	3040	5270	8310	11900
350	382	841	1450	3290	5690	8970	12900

Vacuum Relief Capacity (Nm³/h)

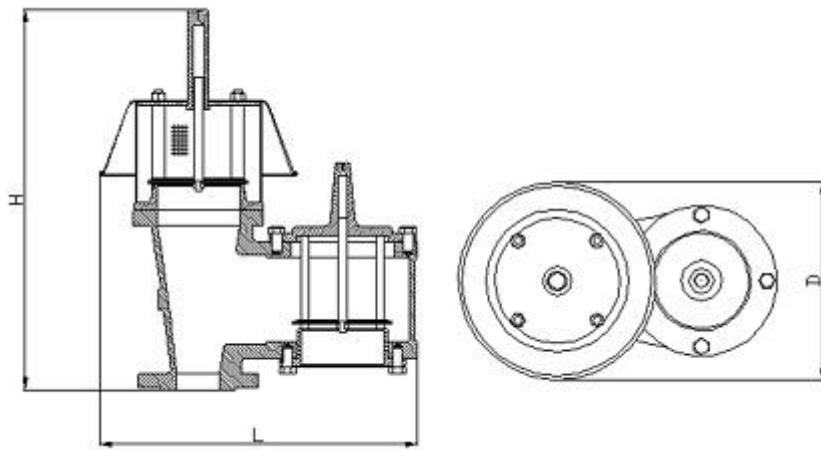
Set Pressure	Size						
mm Wc	2" (DN50)	3" (DN75)	4" (DN100)	6" (DN150)	8" (DN200)	10" (DN250)	12" (DN300)
25	49	110	196	440	780	1220	1760
50	69	155	276	620	1100	1730	2480
75	84	190	338	760	1350	2110	3040
100	97	219	389	880	1560	2430	3500
125	109	245	435	980	1740	2720	3910

Part List



1. Body	7. Vacuum Port Guide	13. Weather Hood
2. Pressure Seat	8. Pressure Port Guide	14. Guide Plate
3. Vacuum Seat	9. Pressure Stem	15. Pressure Stem Center Guide
4. Vacuum Cover	10. Vacuum Stem	16. Pressure Seat O-ring
5. Pressure/Vacuum Diaphragm	11. Pressure Screen	17. Cover O-ring
6. Pressure/Vacuum Pallet	12. Vacuum Screen	18. Vacuum Seat O-ring

General Dimension



Nominal Bore		L	D	H	W
Inch	mm	mm	mm	mm	Approx. kg
2"	50	336	215	340	15
3"	80	429	270	376	28
4"	100	487	296	435	55
6"	150	651	395	545	108
8"	200	803	496	628	174
10"	250	935	596	732	241
12"	300	1112	676	842	340

نشانی: اصفهان- بلوار دانشگاه صنعتی اصفهان- شهرک علمی و تحقیقاتی اصفهان- پارک علم و فناوری شیخ بهایی،

سوله شماره ۲۰، شرکت پیشرو گاز ماهر تلفن: ۰۳۱۳۳۹۳۱۰۶۰ فکس: ۰۳۱۳۳۹۳۱۰۵۹